



Electrosurgical Unit for Endoscopic and Colonoscopic Applications



This electro-surgical system for endoscopy and colonoscopy is comprised of the SS-200E electro-surgical unit and the Argon 2 plasma coagulator. Designed and built with WEM technology, the set contains the unique **Ecut** function, which provides pulsed endoscopic cuts that allow surgeons to perform procedures with greater control and accuracy, and to collect better quality samples from polyps and dry lesions for histological examination.

Its efficacy has been confirmed by the participants of the hands-on course delivered at the São Paulo Clinic Hospital (*Hospital Hospital das Clínicas de São Paulo*), who considered it ideal for ESD procedures (Endoscopic Submucosal Dissection), Papillotomy, Polypectomy and Mucosectomy. This attests to the system's excellent performance.

In addition to **Ecut**, the argon plasma coagulation leads to reduced surgical time and excellent cicatrization, thus reducing tissue damage and bleeding risk.

Recommended applications

- ESD
- polypectomy
- mucosectomy
- sphincterectomy
- Zenker's diverticulectomy
- tumor tunneling
- epithelial ablation for Barrett's esophagus
- actinic proctitis
- Barrett's esophagus

Features

SS 200E microprocessed electro-surgical unit

- fully microprocessed
- seven functions: **Ecut**, pure cut, blend 1, blend 2, blend 3, spray and bipolar coagulation
- **Ecut** function with 4 hemostasis levels
- digital memory for power levels in all operation modes (pure cut, blends, coagulation and bipolar)
- automatic voltage selection
- monitoring system for patient-plate circuit
- connection to argon plasma coagulator
- control through manual pencil or footswitch

Argon 2 plasma coagulator

- adjustable argon gas flow 0 to 5 l/min
- adjustment increments of 0.5 l/min
- compatible with WEM footswitch operated pencils and catheters
- provided with trolley

These products are certified according to NBRIEC 60601-1, NBRIEC 60601-1-2 (electromagnetic compatibility) and NBRIEC 60601-2-2

WEM EQUIPAMENTOS ELETRÔNICOS LTDA

CNPJ 54611678/0001-30 IE 582181462110

RUA MAL MASCARENHAS DE MORAES, 550 - RIBEIRÃO PRETO - SÃO PAULO - BRASIL - CEP 14095-120

FONE (16) 3512-4600

FAX (16) 3512-4637

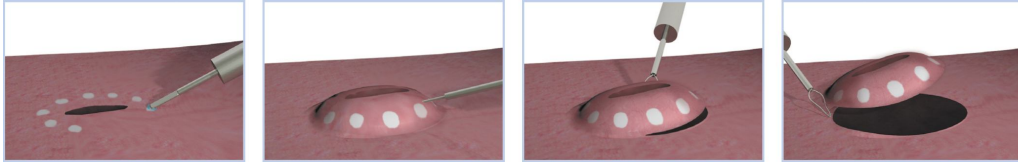
e-mail: wem@wem.com.br

1



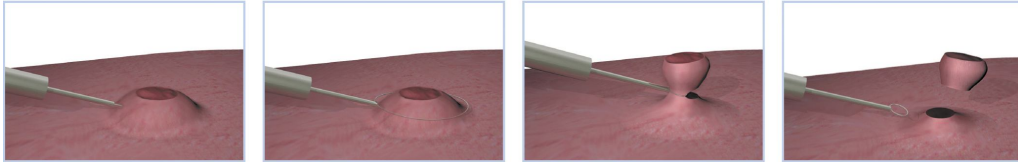
Procedures

ESD - Endoscopic Submucosal Dissection



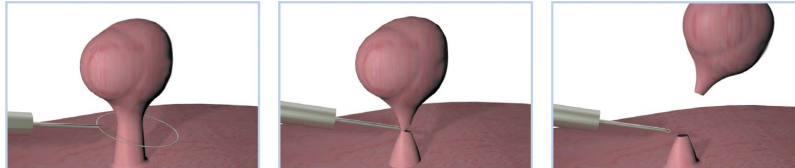
The pulsed cut automatically controls the incision in endoscopic dissection, which makes the procedure safer and more accurate

Mucosectomy



Enables controlled and thorough resection with minimal bleeding

Polypectomy



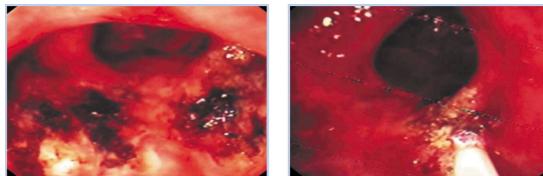
Ecute reduces bleeding during removal, which enables better assessment of borders of dried polyps

Papillotomy



The pulsating system enables adequate papilla opening with gradual and controlled resection

Actinic proctitis (bleeding following radiotherapy)



In the treatment of actinic proctitis, the argon plasma completely controls bleeding with minimal tissue damage

Contact us:

EXport Departement - Ana Bomfim o Carolina

Phone: +55 16 3512-4601 or 3512-4602

e-mail: export@wem.com.br

WEM EQUIPAMENTOS ELETRÔNICOS LTDA

CNPJ 54611678/0001-30 IE 582181462110

RUA MAL MASCARENHAS DE MORAES, 550 - RIBEIRÃO PRETO - SÃO PAULO - BRASIL - CEP 14095-120

FONE (16) 3512-4600

FAX (16) 3512-4637

e-mail: wem@wem.com.br

2